

SE 1/4
SECTION 33, T.7N., R.2W., S.L.B. & M.

35-2

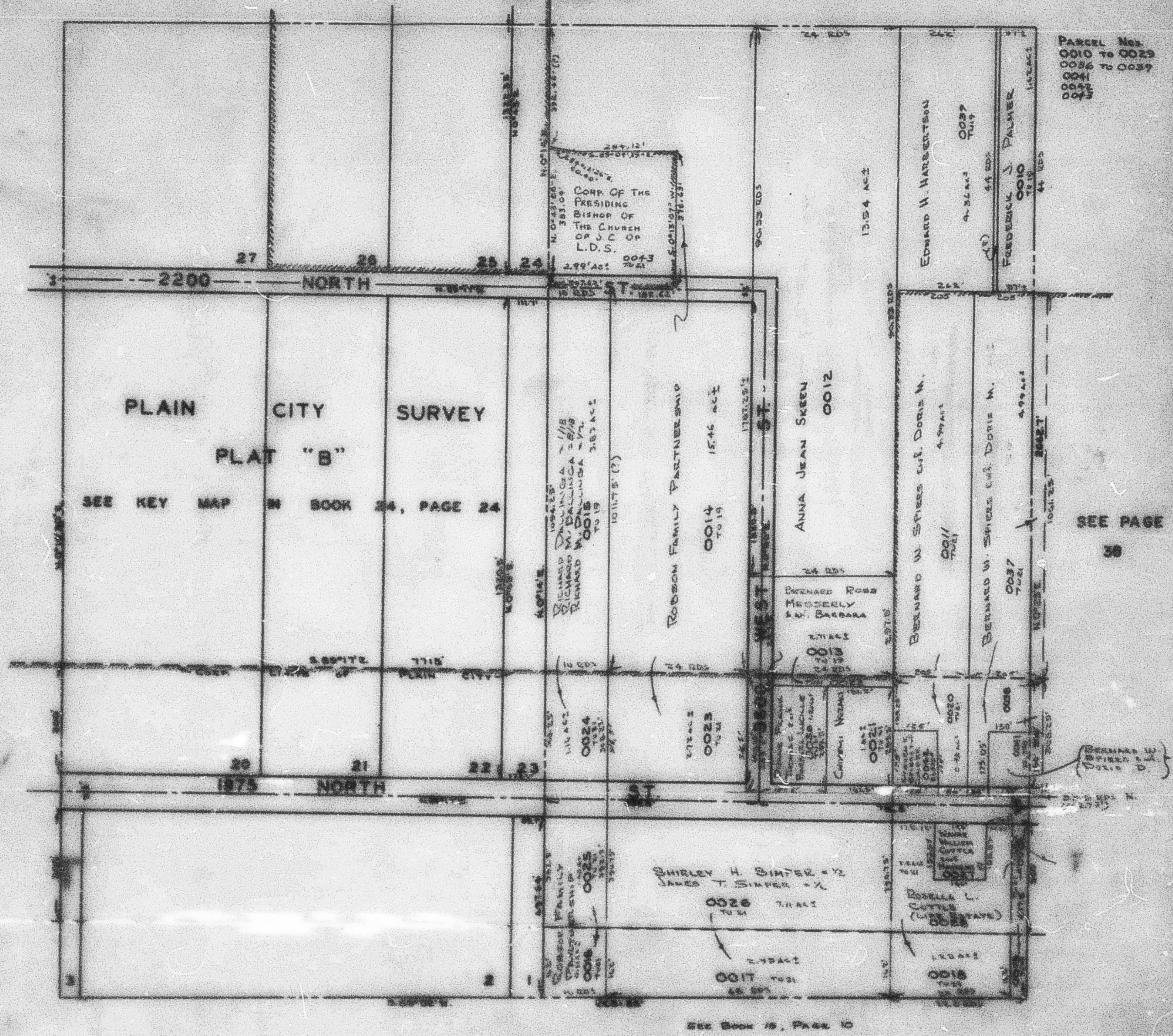
TAXING UNITS: 19, 21

IN PLAIN CITY DISTRICT & PLAIN CITY

SCALE 1" = 200'

PREFIX: 19-035

SEE PAGE 35-1



SEE BOOK 15, PAGE 10